



PLATFORM HOUSE | WALKNORTH ARCHITECTS

TRADITIONAL LAND OWNERS

Garigal

YEAR

2023

CHAPTER

New South Wales

CATEGORY

Residential Architecture – Houses (Alterations and Additions)

BUILDER

Beach Houses Australia

PHOTOGRAPHER

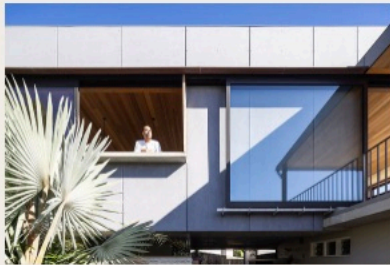
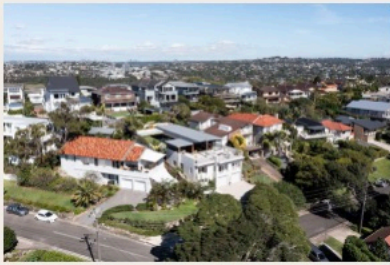
Simon Whitbread

PROJECT SUMMARY

This project is situated on a sloping, north facing site on Sydneys’ Northern Beaches with a long northern view of the coastline. The existing two storey home had no relationship to the ground and minimal openings towards this northern aspect.

We conceived the existing house as a rock shelf and the addition as a bridge that spanned from this shelf across to the rear yard, providing occupants with a flat viewing platform and a level garden accessed directly from the living areas. This garden was flanked by a concrete pool built above the ground at the southern end retaining garden as the backdrop.

Practically, the existing pitched roof was removed and a large terrace created by ‘capping’ the house with a concrete slab. A new living area was constructed as a long space stretching out towards the view which has been dramitcally opened through the removal of the existing roof.





Platform House | Walknorth Architects | Photographer: Simon Whitbread